

State of Wyoming Corner Record

(In compliance with the *CORNER PERPETUATION AND FILING ACT*, Wyoming Statutes, 1997 Section 33-29-140 et. seq., and the Rules and Regulations of the Board of Professional Engineers and Professional Land Surveyors)

Reverse side of this form may be used if more space is needed.

Record of original survey and citation of source of historical information (if corner is lost or obliterated). Description of corner monumentation evidence found and/or monument and accessories established to perpetuate the location of this corner. Sketch of relative location of monument, accessories, and reference points with course and distance to adjacent corner(s) (if determined in this survey). Method and rationale for reestablishment of lost or obliterated corner.

LOCATION: Quarter Corner common to Sections 16 and 17, Township 14 North, Range 65 West, 6th P.M., Laramie County, Wyoming.

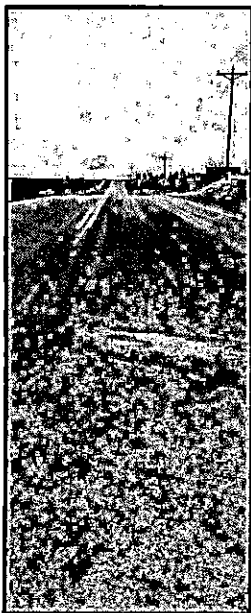
HISTORICAL DATA: Per the field notes of the Survey of the Subdivision Lines in Township 14 North, Range 65 West of the 6th P.M., in the Territory of Wyoming. Surveyed by Henry G. Hay, under his joint contract with John B. Thomas dated 16th July 1870. Survey commenced 18th August 1870. Surveyed completed 20th August 1870. "Set Granite Boulder 14x8x5 for corner to Sections 8, 9, 16 and 17" (Ref. Vol. 3, 1870, page 211).

EVIDENCE FOUND: none

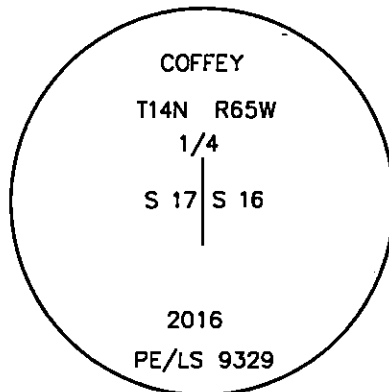
MONUMENT & ACCESSORIES ESTABLISHED: Cut hole in pavement, remove core and set a 3.25" aluminum cap atop a #5 rebar, 4" deep. Replace pavement core and put a mag nail in pavement to mark location.

LAT / LONG: 41°10'52.141"N, 104°40'28.764"W (NAD 83)

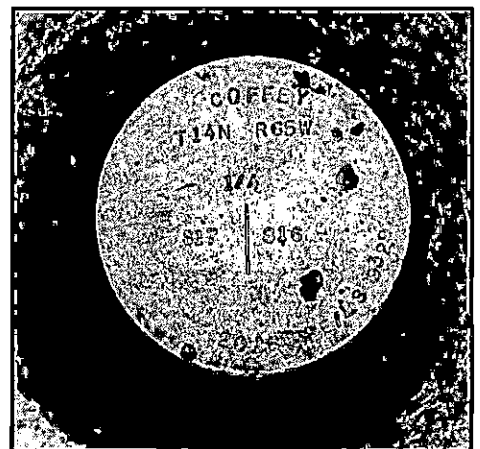
Monument Profile



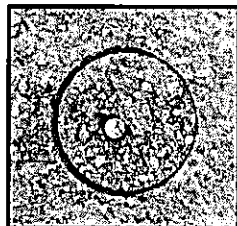
Monument Sketch



Monument Inscription



Monument Marker



SEE REVERSE FOR CORNER TIES.

Date of Field Work: 04/20/2016

Office Reference: 2167.00

Point #: 4072

Cross Index Plat

	1	2	3	4	5	6	7	8	9	10	11	12	13	14	15	16	17	18	19	20	21	22	23	24	25		
A	+	+	+	+	+	+	+	+	+	+	+	+	+	+	+	+	+	+	+	+	+	+	+	+	+	+	A
B	+	+	+	+	+	+	+	+	+	+	+	+	+	+	+	+	+	+	+	+	+	+	+	+	+	+	B
C	+	6	+	5	+	4	+	3	+	2	+	1	+	+	+	+	+	+	+	+	+	+	+	+	+	C	
D	+	+	+	+	+	+	+	+	+	+	+	+	+	+	+	+	+	+	+	+	+	+	+	+	+	+	D
E	+	+	+	+	+	+	+	+	+	+	+	+	+	+	+	+	+	+	+	+	+	+	+	+	+	+	E
F	+	+	+	+	+	+	+	+	+	+	+	+	+	+	+	+	+	+	+	+	+	+	+	+	+	+	F
G	+	7	+	8	+	9	+	10	+	11	+	12	+	+	+	+	+	+	+	+	+	+	+	+	+	+	G
H	+	+	+	+	+	+	+	+	+	+	+	+	+	+	+	+	+	+	+	+	+	+	+	+	+	+	H
J	+	+	+	+	+	+	+	+	+	+	+	+	+	+	+	+	+	+	+	+	+	+	+	+	+	+	J
K	+	+	+	+	+	+	+	+	+	+	+	+	+	+	+	+	+	+	+	+	+	+	+	+	+	+	K
L	+	+	+	+	+	+	+	+	+	+	+	+	+	+	+	+	+	+	+	+	+	+	+	+	+	+	L
M	+	18	+	17	+	16	+	15	+	14	+	13	+	+	+	+	+	+	+	+	+	+	+	+	+	+	M
N	+	+	+	+	+	+	+	+	+	+	+	+	+	+	+	+	+	+	+	+	+	+	+	+	+	+	N
O	+	+	+	+	+	+	+	+	+	+	+	+	+	+	+	+	+	+	+	+	+	+	+	+	+	+	O
P	+	+	+	+	+	+	+	+	+	+	+	+	+	+	+	+	+	+	+	+	+	+	+	+	+	+	P
Q	+	19	+	20	+	21	+	22	+	23	+	24	+	+	+	+	+	+	+	+	+	+	+	+	+	+	Q
R	+	+	+	+	+	+	+	+	+	+	+	+	+	+	+	+	+	+	+	+	+	+	+	+	+	+	R
S	+	+	+	+	+	+	+	+	+	+	+	+	+	+	+	+	+	+	+	+	+	+	+	+	+	+	S
T	+	+	+	+	+	+	+	+	+	+	+	+	+	+	+	+	+	+	+	+	+	+	+	+	+	+	T
U	+	+	+	+	+	+	+	+	+	+	+	+	+	+	+	+	+	+	+	+	+	+	+	+	+	+	U
V	+	+	+	+	+	+	+	+	+	+	+	+	+	+	+	+	+	+	+	+	+	+	+	+	+	+	V
W	+	+	+	+	+	+	+	+	+	+	+	+	+	+	+	+	+	+	+	+	+	+	+	+	+	+	W
X	+	+	+	+	+	+	+	+	+	+	+	+	+	+	+	+	+	+	+	+	+	+	+	+	+	+	X
Y	+	+	+	+	+	+	+	+	+	+	+	+	+	+	+	+	+	+	+	+	+	+	+	+	+	+	Y
Z	+	+	+	+	+	+	+	+	+	+	+	+	+	+	+	+	+	+	+	+	+	+	+	+	+	+	Z
	1	2	3	4	5	6	7	8	9	10	11	12	13	14	15	16	17	18	19	20	21	22	23	24	25		



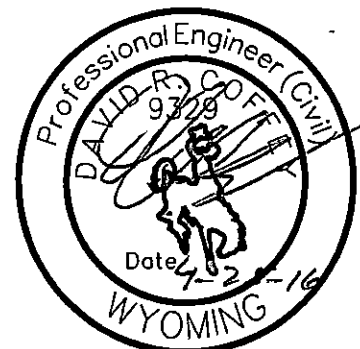
COFFEY

ENGINEERING & SURVEYING

902 South 3rd St., Laramie, WY 82070
[P] 307-742-7425 [F] 307-742-7403

This corner record was prepared by me
or under my direction and supervision.

SEAL & SIGNATURE



David R. Coffey, LS #9329

Corner Name West Quarter Corner Section 16, T 14 N, R 65 W, 6th P.M.

County: Laramie Wyoming

Cross-Index No.: L-9

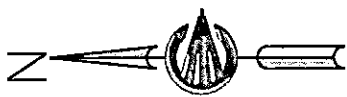
SBRPEPLS/PLSW: March 1994; PLSW January 1998



RECP #: 683726



RECORDED 5/5/2016 AT 11:32 AM BK# 2498 PG# 725

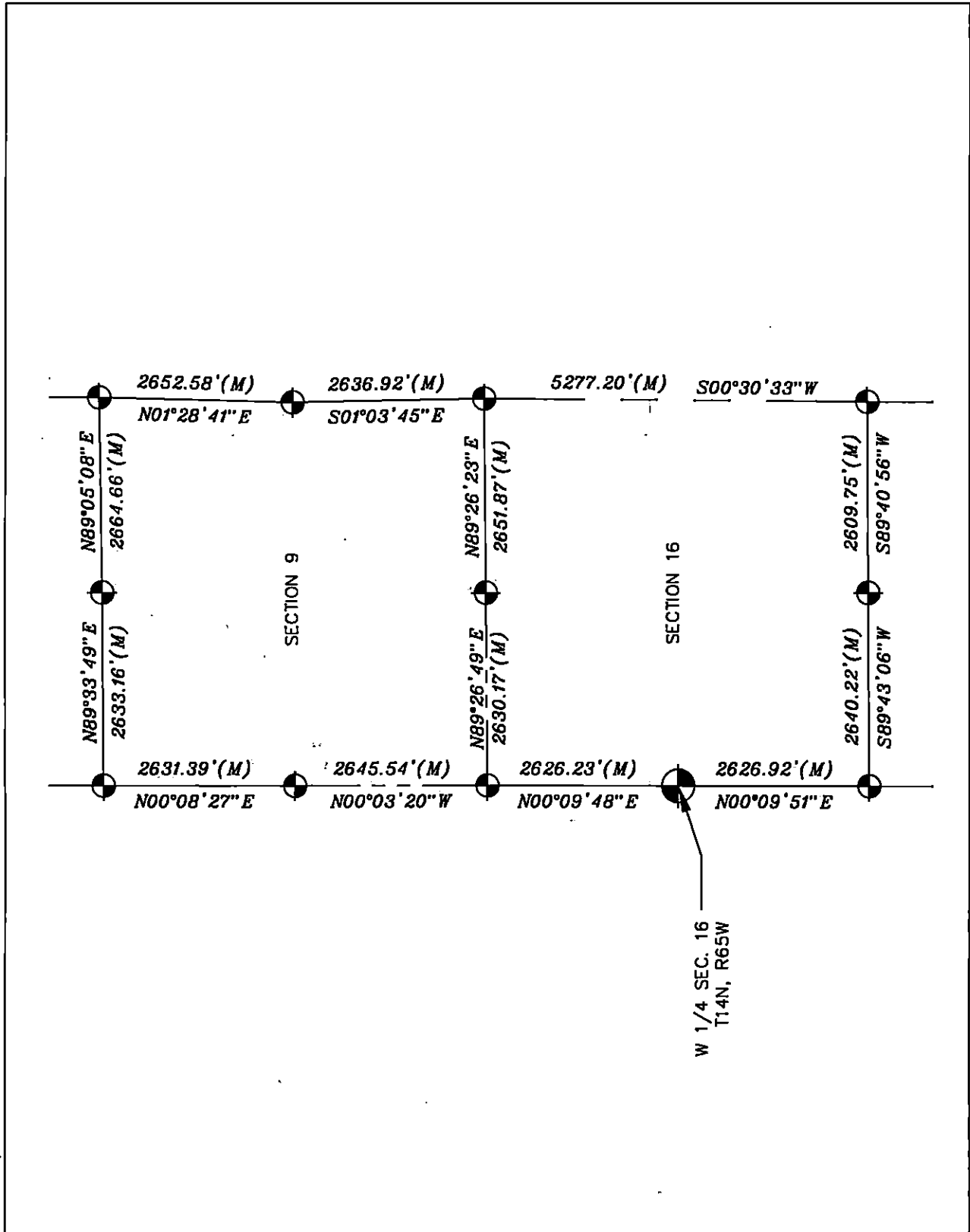
Debra K. Lathrop, CLERK OF LARAMIE COUNTY, WY, PAGE 1 OF 2



SCALE: 1 IN = 2000 FT



-  FOUND PUBLIC LAND SYSTEM MONUMENT
-  REFERENCED FOUND PUBLIC SURVEY SYSTEM MONUMENT



RECP #: 683726

RECORDED 5/5/2016 AT 11:32 AM BK# 2498 PG# 726
Debra K. Lathrop, CLERK OF LARAMIE COUNTY, WY PAGE 2 OF 2